



**ADELINE PARROT
COLLAGES PORTFOLIO**

Adeline Parrot is a French artist born in 1987.

Currently living and working in Taipei, Taiwan, she is graduated from Villa Arson in Nice, France, in 2011.

After being graduated, Adeline left France for Asia.

First Beijing, where she spent the last nine years, her artistic work built itself from new influences and culture imagery and objects, gathered from travels and markets.

Her creative process involves the collection of visual elements, magazine clippings, papers, fabrics, and diverse other materials, such as objects. This provides a database to work from.

Adeline Parrot uses this basis to raise forms, colors, and patterns (architectural details, wallpaper or textile patterns, souvenirs, ornamental elements, etc.) collages, which, displaced from their original context, are assembled to create new imagery, telling new stories.

Now in Taiwan, she continues creating a colored, alive style influenced by what she is seeing in her daily life. Working on small series based on topics she wants to explore, she created bold and vivid collages.

She exhibits in galleries in France, China, and Austria.

She also explores the world of textile design, creating in 2020 a brand called Atelier Canopée, where she proposes a new work made on silk.

Jungle Night, collage, 30x40cm





Pebbles



The Zoo



Burning sky

LANDSCAPE

ONGOING SERIES
COLORED, PATTERN AND PAINTED PAPERS
30X40CM
2021

Inspired by real or imaginary space, the series Landscape is an ongoing project.

Big size collages, the landscapes are contrasted and saturated, created a feeling of unreal space where just for one moment, the light and the space stopped being alive to enable the viewer to observe the scenery.



TAIWAN'S EAST COAST

SERIES OF 13 COLLAGES
COLORED AND PAINTED PAPERS
21X29,7CM
2020

Following highway 11 on Taiwan's east coast, we drive for several days. Every morning we pin the places we wanted to see on our map.

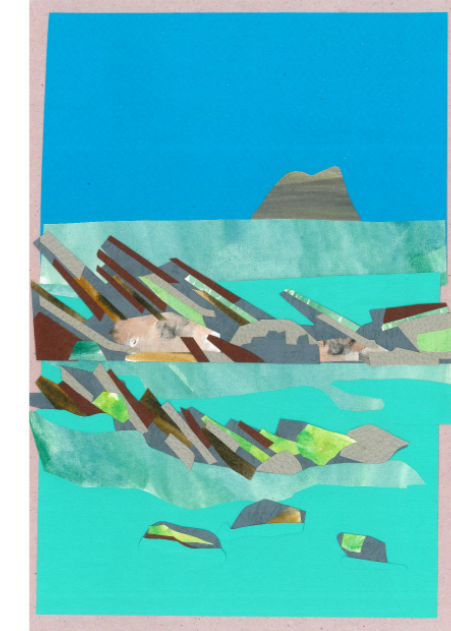
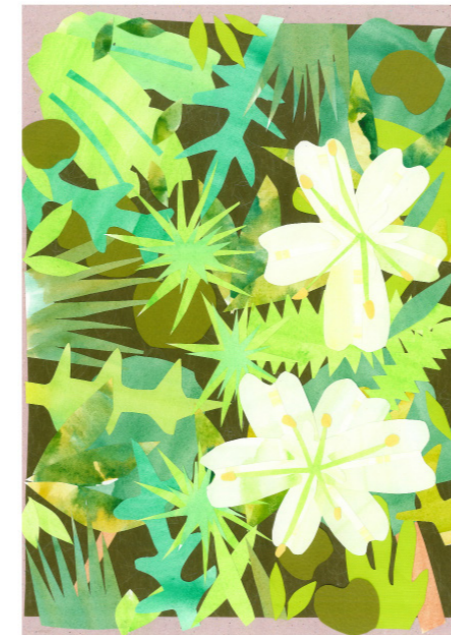
At every turn the landscape changes. Ahead of the Pacific Ocean, the volcanic rocks have strange shapes and colors.

The waves mold the rocks over the years creating a lunar scene. We observe the gray and purple strata, glossy from water and sun. On the surface, the wet seaweed is tossed by the waves.

Underwater, if you are lucky, you can see tropical fish in their colorful habitat. Spotted in the coral: a sergeant major fish busy finding food. Back on the road, we are trapped by the Pacific on the left and high mountains on the right. The clouds are bumping into the peaks, contrasting with the color of the rice fields.

The weather is changing. The rain is coming. The greenish colors of the leaves begin to saturate. The contrast between the sky and the lush nature is vivid.

It's an explosion of leaves, fluorescent ferns, and exotic flowers. Delicate wild lilies emerge from nature, waiting to be pictured...



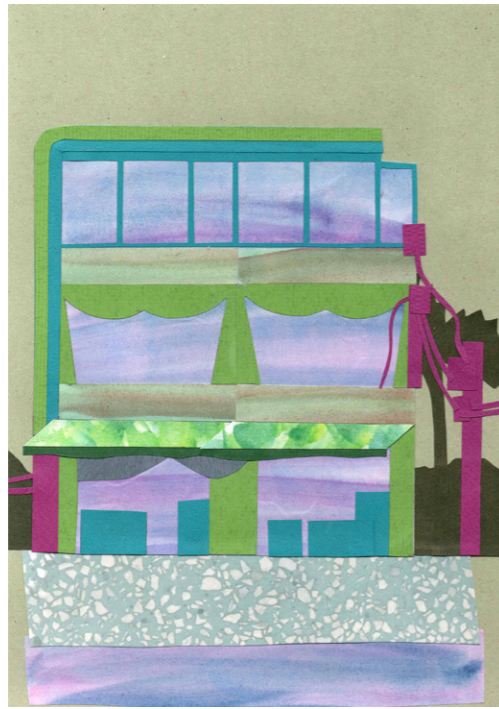


HOUSES

SERIES OF 7 COLLAGES
COLORED, PATTERN AND PAINTED PAPERS
21X29,7CM
2021

This series of collages was created influenced by the architecture of countryside houses in Taiwan.

Concrete and cubic houses, concrete style, they offered graphic and pattern details inspirational to create collages.



On the roof

CIRCLES

SERIES OF 9 COLLAGES, COLORED, WASI AND PAINTED PAPER
20X20CM
2019

This beginning of this series started with the find of traditional Chinese painting papers. They all have the same layout, beige textured background with a circle in the middle.

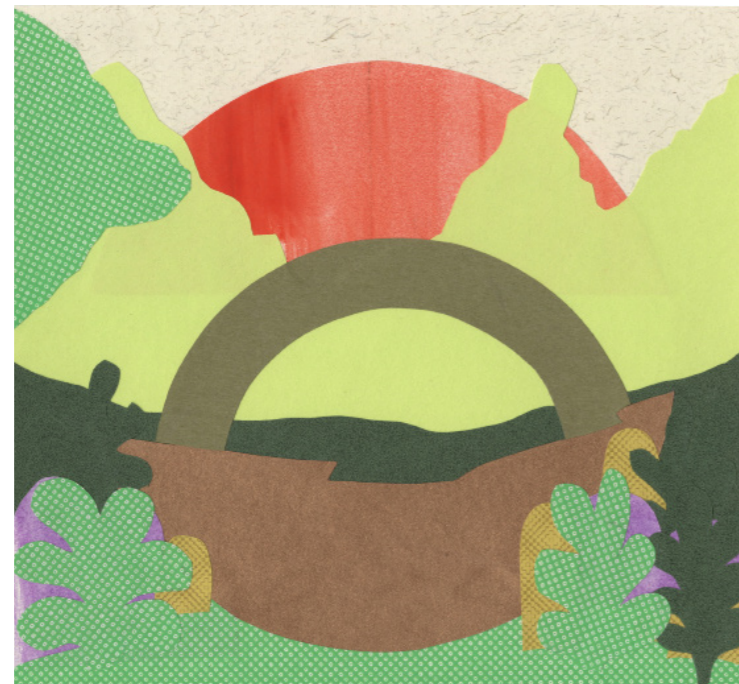
I decided to start to work with this layout and created a series of compositions based on this shape.

Sometimes the circle is a sun, a part of the architecture, or a landscape. The textured and pattern papers are mixing to create a playful picture rhythmically by the circle.

This series is linked. The viewer is welcomed to look at it as a panorama story.



The Palmgrove



Sunset



The three cranes

SUZHOU GARDENS

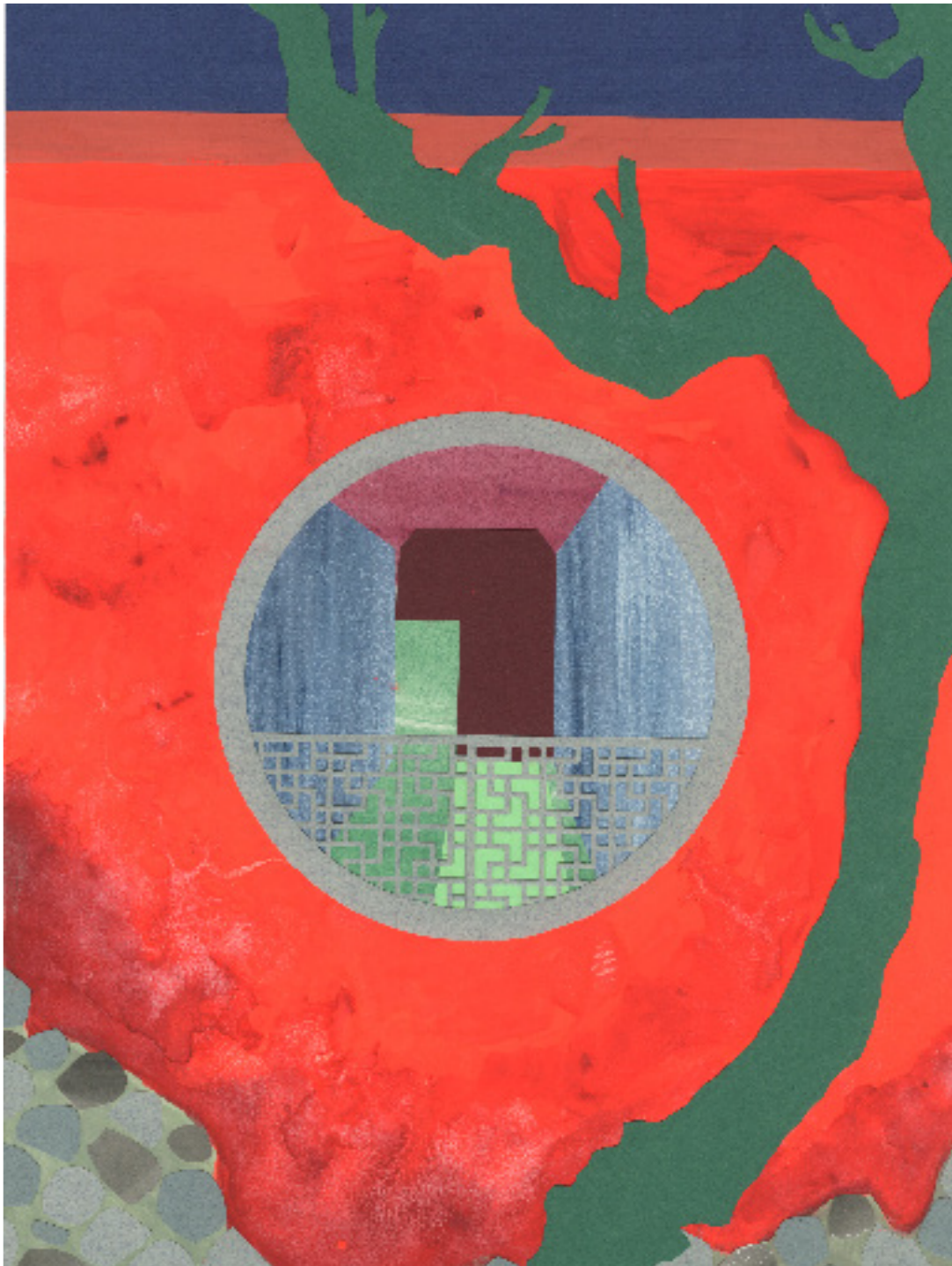
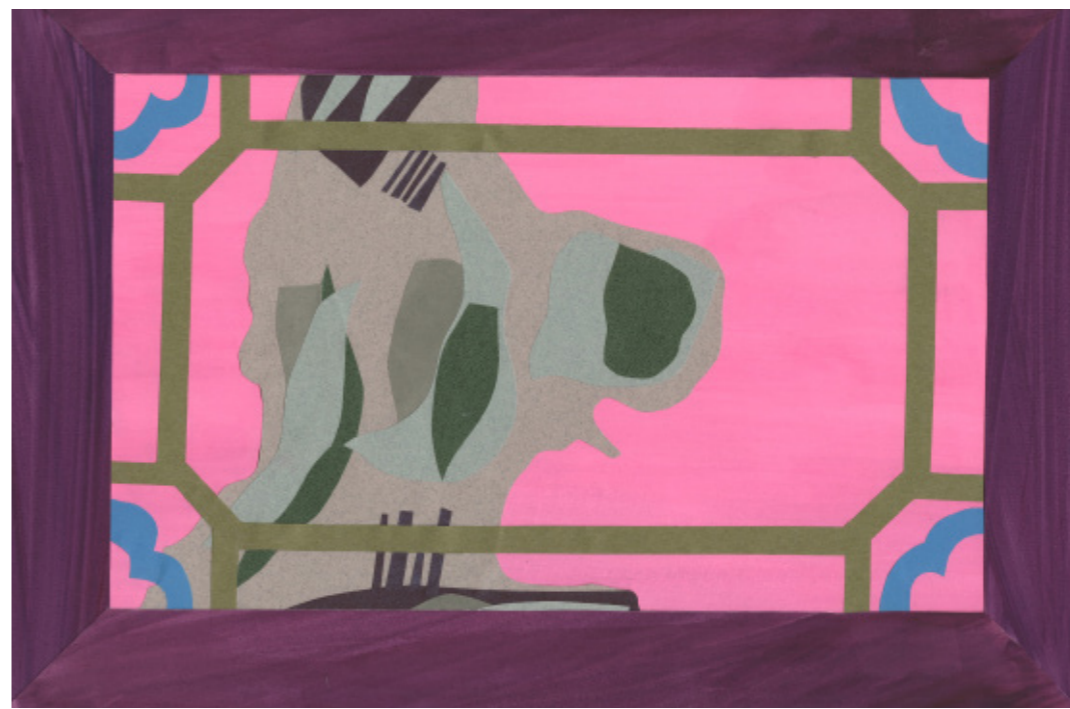
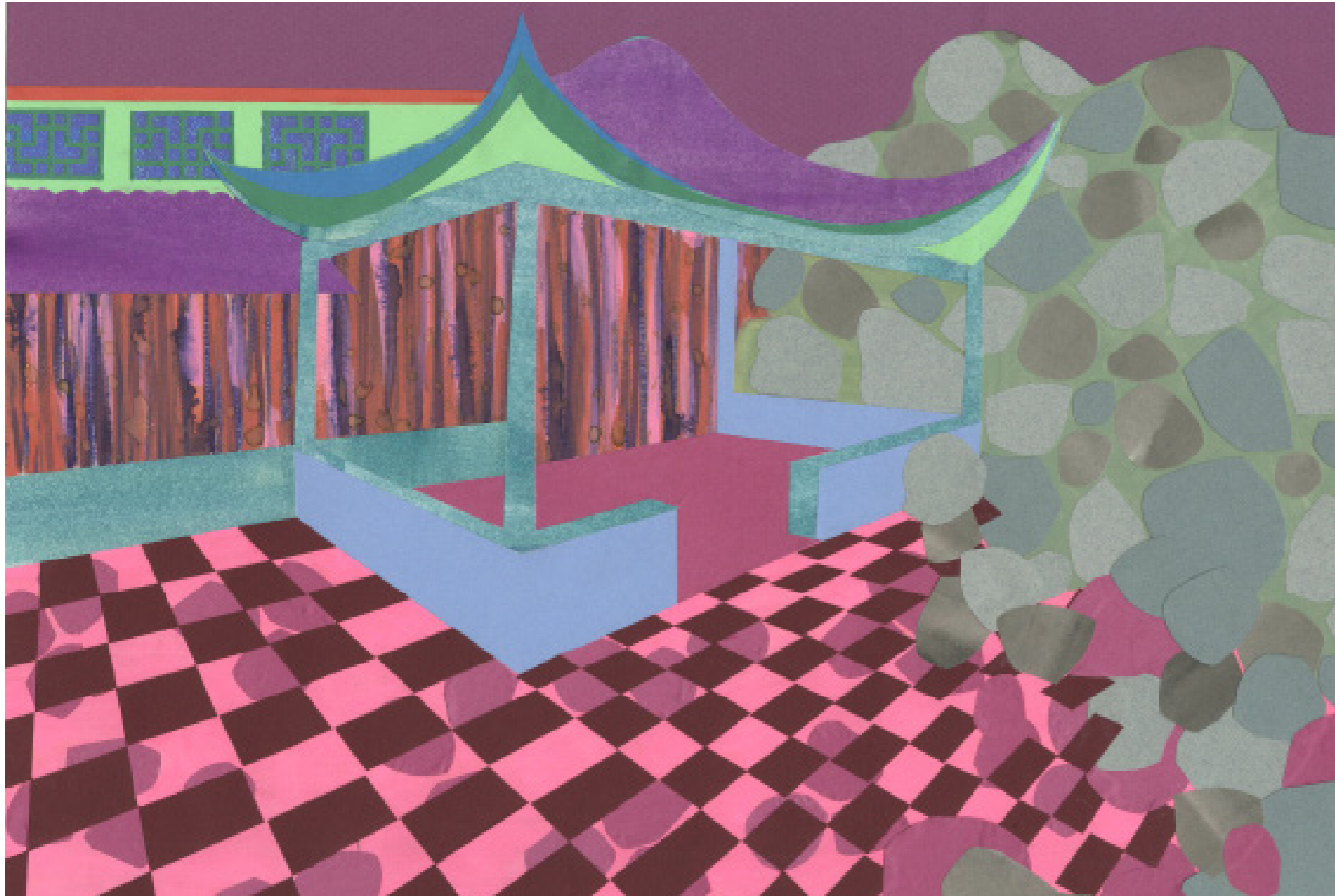
SERIES OF 10 COLLAGES
COLORED, PAINTED AND TEXTURED PAPERS
40X30CM
2019

This series of collages are inspired by the traditional Chinese gardens from Suzhou. The way the garden is built, in relationship with Chinese ink paintings, was an interesting fact to work with.

Those gardens are like a painting in 3D. To emphasize those compositions, I worked with contrasted and sour colors. The collages offer to the walker different points of view through gates, windows, or pavilions.

The ornaments are playing with the strange shape of the rocks and offer a new hidden perspective in the garden.







Rapa Nui, 25x36cm

VISIONS OF LEILANI

SERIES OF 13 COLLAGES
POSTER PAINT AND COLLAGES
2015-2016

In this series of collages, Adeline Parrot combines a variety of distorted Tiki references with the vastness of empty architectural landscapes. The pattern repeats and the color dazzles us, tending toward fluorescent and hallucination.

The artist gives us a lot to see, yet nothing is easy to discern, encouraging an uneasy hesitation between enjoyment and uncertainty.

Behind the overdose of pigments hides a certain strangeness that leads us to yet unexplored and troubling territories.

These new worlds she opens are timeless and locationless. They are lost in some kind of infinity, into which visitors are invited to project themselves. Bodies and minds are set free, once more.

The artist rewrites the faith of Tiki's lost spirituality absorbed by pop society and proposes us an ultra-contemporary vision of it. Mathilda Portoghese

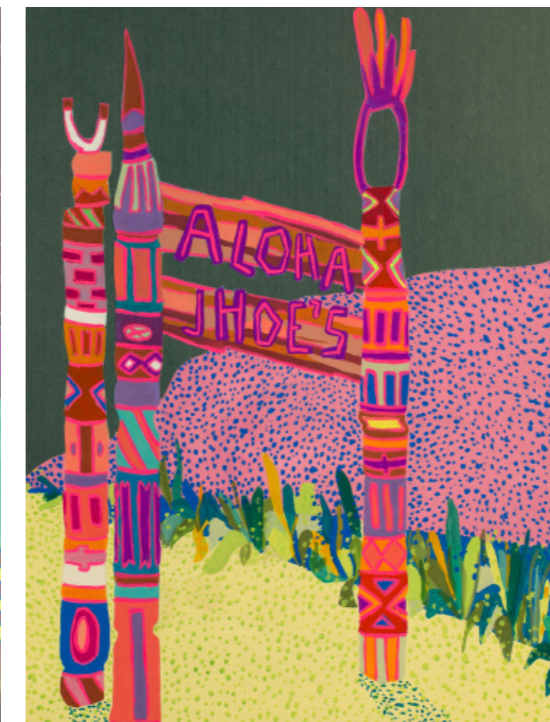
Mathilda Portoghese

End of the '50s, the GI are back from the Pacific. Hawaii is now part of the USA, and American society is thirsty for fun and exotism to heal its wounds. Totally ignoring the original spiritual roots of Tiki, America allows itself to re-create the original spiritual roots of Tiki, America allows itself to re-create its own Pacific dream of primitivism, made of plastic, alcohol, and fake legends.

Tiki is now everywhere: architecture, Hollywood, fashion...



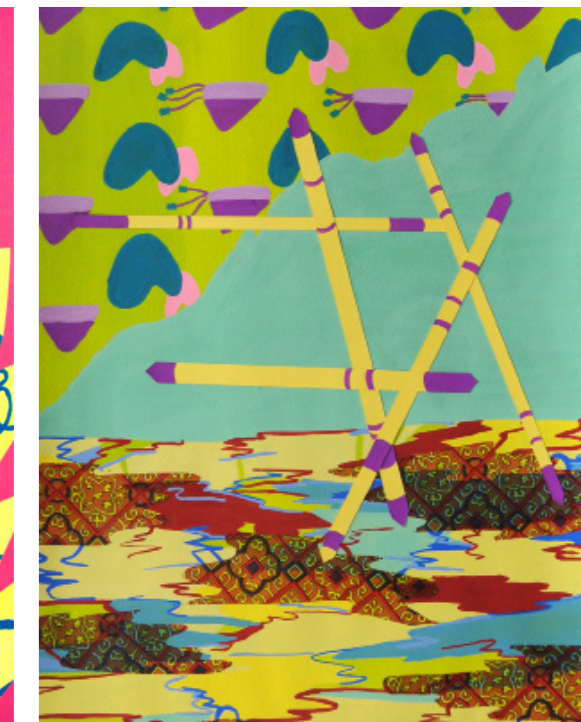
Mister Lava, 36x25 cm



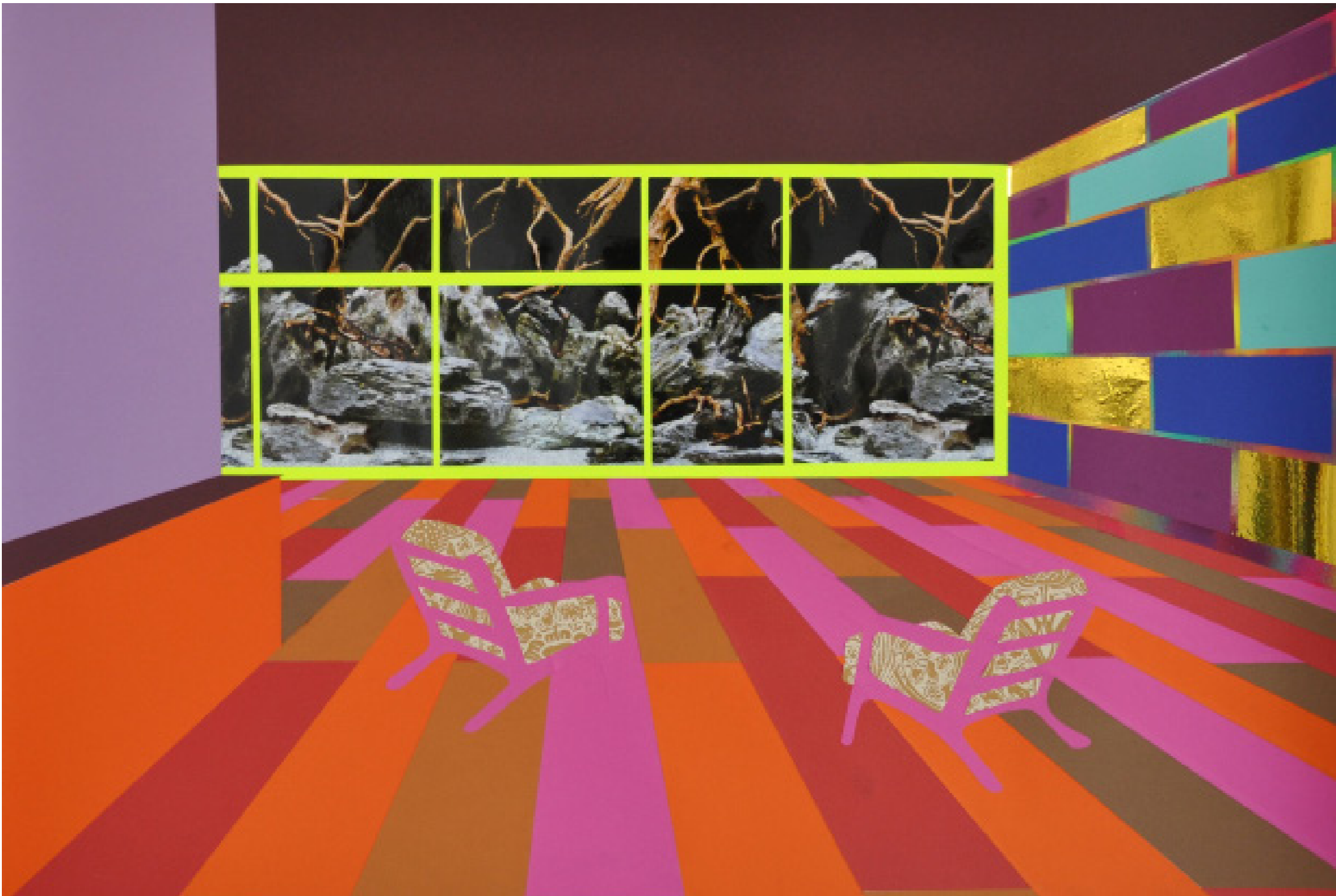
Aloha Jhoe's, 27x36 cm



Dancing Tiki, 27x36 cm



Mikado, 27x37 cm



CONTEMPLATIONS

SERIES OF 5 COLLAGES
COLORED, TEXTURED AND PATTERN PAPERS
APP 100X80CM
2014

Contemplations are a series of big size collages. Interiors don't take inspiration in real interiors. They are completely created from scratch.

The point of view never changes: two chairs are in an empty space rhythmic by architectural pattern.

Those empty chairs are contemplating a landscape cuts into a fish-tank background.



WWW.ADELINEPARROT.COM

CONTACT

adelineparrot@gmail.com
+886963688201
line adelineperroquet

